



Oslo Series 80 Motorised Curtain Tracks

Oslo Series 80 motorised curtain tracks are an affordable system for homes, offices and hospitals. Using standard or Roller Pleat curtains. Flexible switching is available using wall switching, Oslo plug receiver and remote as well as home management systems such as C-BUS and Dynalite, etc.

A heavy duty aluminium extrusion (32 x 26mm) creates the backbone of this system.

A bayonet connection allows for quick and secure motor attachment to the track. An internal belt, running in individual channels allows traversing of curtains around bends and curves. The belt is driven by a sprocket drivewheel, supported by two sealed roller bearings. Simple adjustments of curtain travel is enabled with internal micro limit switches.

A single motor is used for most applications with three motors to choose from giving 45, 60 and 80 watts of power. Tandem motors with a power range of 120 watts and 160 watts can operate very heavy curtains and very long tracks.

The motors are 240v AC synchronous vertical axis with heavy-duty roller bearings filled with a strong planetary reduction gearbox giving a smooth quiet operation.

The versatility of the **Oslo Series 80** motorised track is that it can be bent around a tight radius of 350mm as well as curves for today's modern style houses with big sweeping windows.

Other standard features include a generous overlap of the curtains, a return plate that allows the curtains to return to the wall hiding the motor and heavy duty wheeled runners.

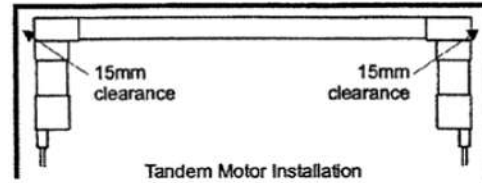
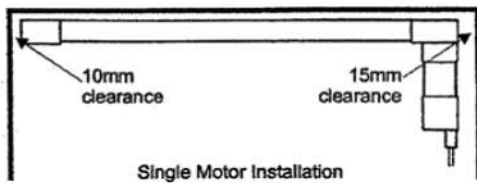
Standard colours are white and clear anodised aluminium finishes. The tracking can be powdercoated to any powdercoating colours to suit your decor.

Oslo Series 80 Motorised Curtain Tracks

Overall Track Length

To allow for the installation of motors onto the track, the overall length of the track must be shorter than the wall to wall measurements, and inside pelmets, by the following amounts.

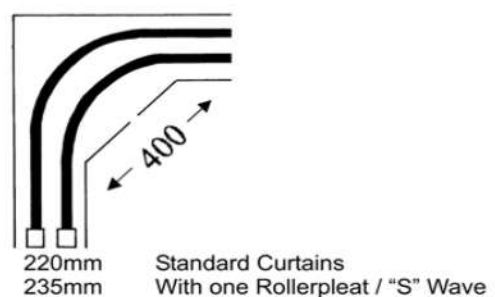
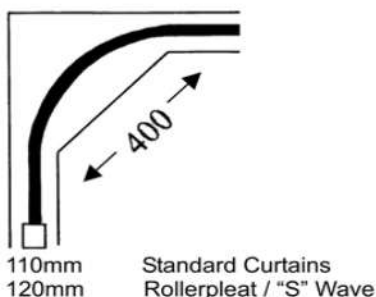
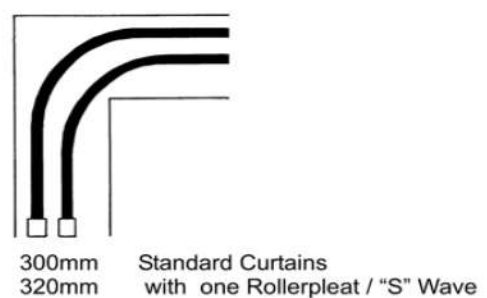
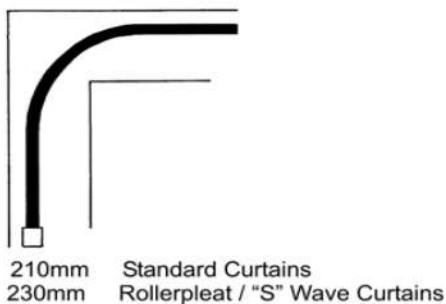
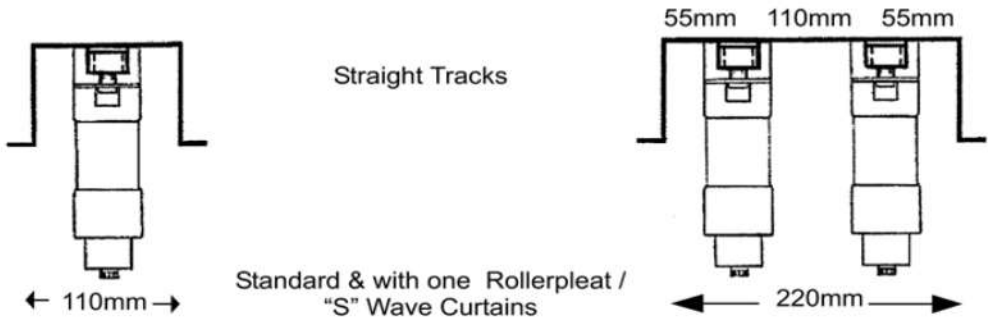
Single motor track – less 25mm
Tandem motor track – less 30mm



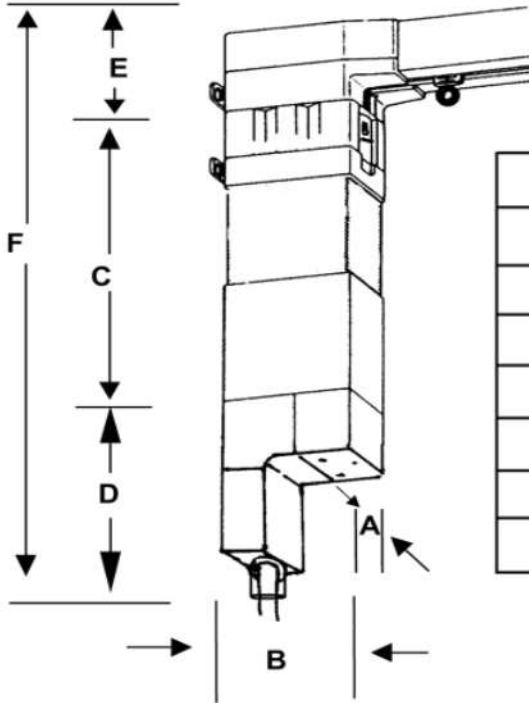
Pelmet Measurements

The pelmet measurements below are a suggested minimum size for a standard weight curtains. Heavier curtains will require a larger pelmet.

Note: All measurements are given for a 350mm radius bend. Larger radius bends will require wider pelmets.



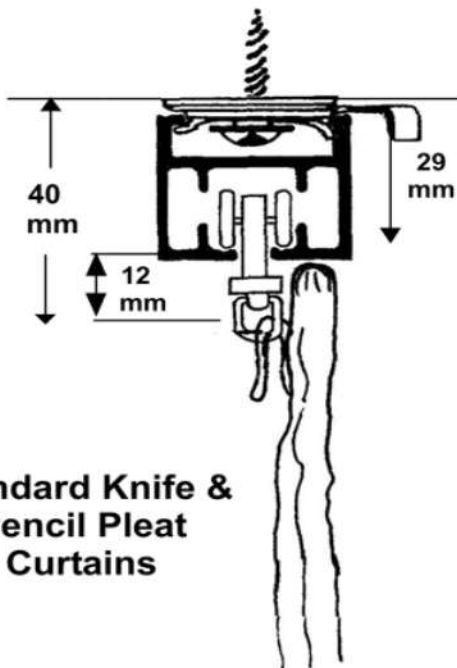
Oslo Series 80 Motorised Curtain Tracks



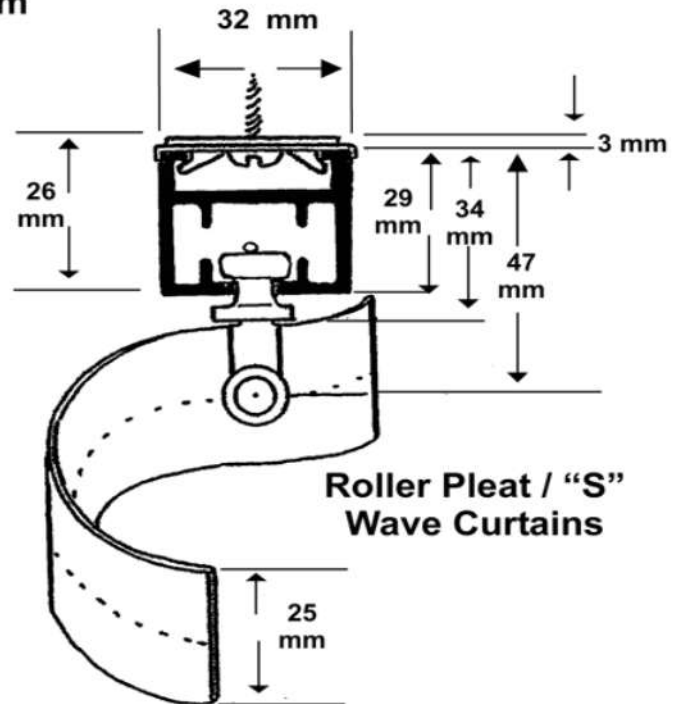
MOTOR DIMENSIONS

	30 Watt	45 Watt	60 Watt	80 Watt
A	50	50	50	50
B	60	60	60	60
C	200	230	230	260
D	70	70	70	70
E	40	40	40	40
F	310	340	340	370
Measurement in mm				

TRACK DIMENSIONS
32 mm x 26 mm



Standard Knife & Pencil Pleat Curtains



Roller Pleat / "S" Wave Curtains

Oslo Series 80 Motorised Curtain Tracks

MOTOR SELECTION CHART

TRACK TYPE	MTRS	3	4	5	6	7	8	9	10	11	12	13	14	15	16	17	18	19	20	
A					30 watt															
						45 watt														
							60 watt													
									80 watt											
											80 watt tandem (160 watt)									
B					45 watt															
						60 watt														
							80 watt													
									80 watt tandem (160 watt)											
C					45 watt															
						60 watt														
							80 watt													
									80 watt Tandem (160 watt)											
D					45 watt															
						60 watt														
							80 watt													
									80 watt Tandem (160 watt)											
E					45 watt															
						60 watt														
							80 watt													
									80 watt Tandem (160 watt)											
F																				
						60 watt														
							80 watt													
								80 watt Tandem (160 watt)												

-  Heavy Curtains
-  Medium Weight Curtains
-  Sheer Curtain

Note - These figures are for Standard centre opening Curtains eg: Knife pleat, pencil pleat with no heading
 - 10 % for one way curtains
 - 20 % for Rollerpleat / "S" Wave Curtains